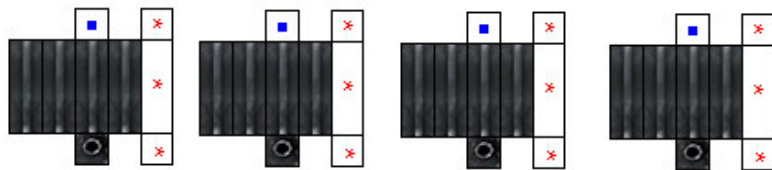
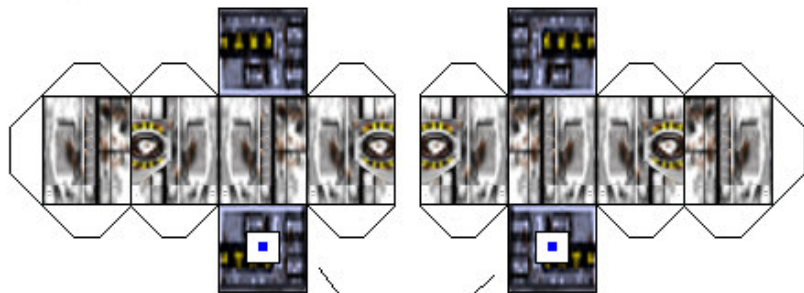


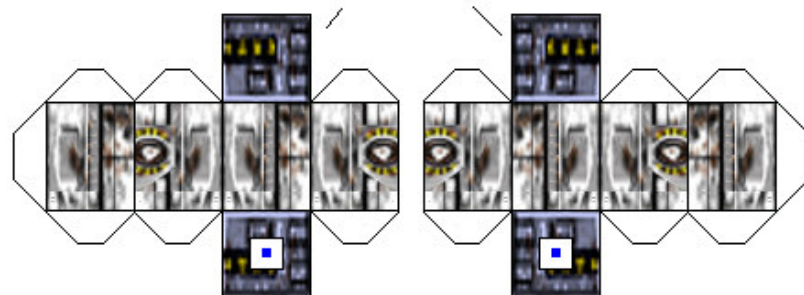
Guns



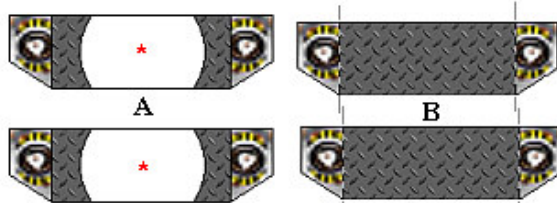
Glue end of gun marked ■ to gun box with part maked ■ .



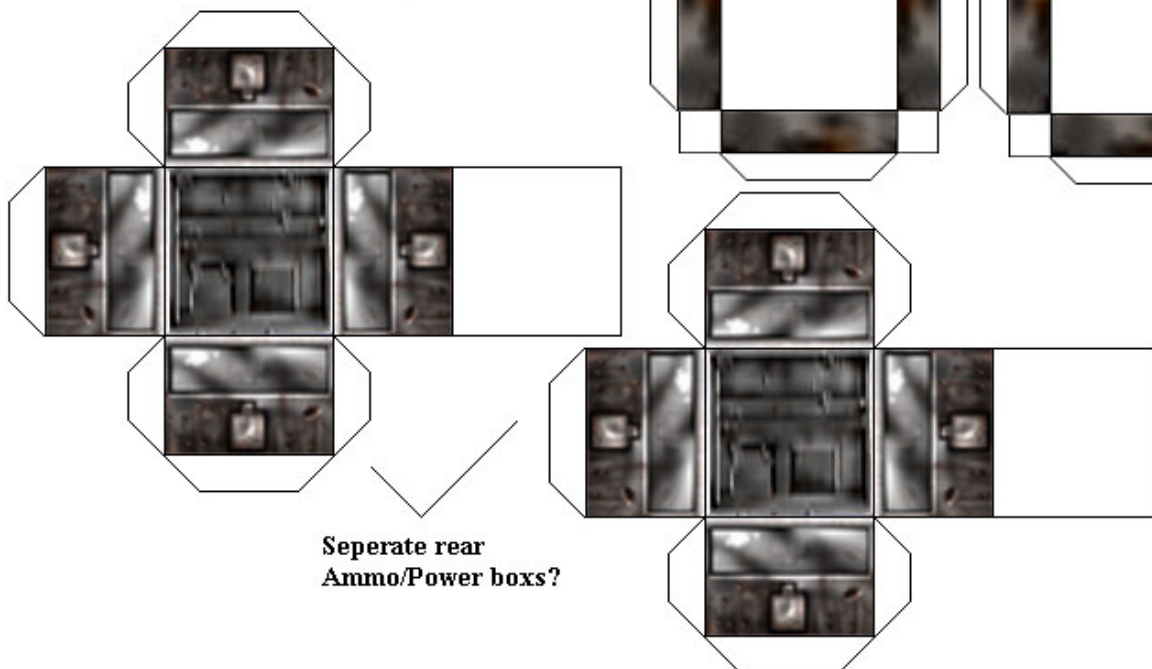
Gun Boxes



Place gun boxes inside part B after placing part B inside of part A

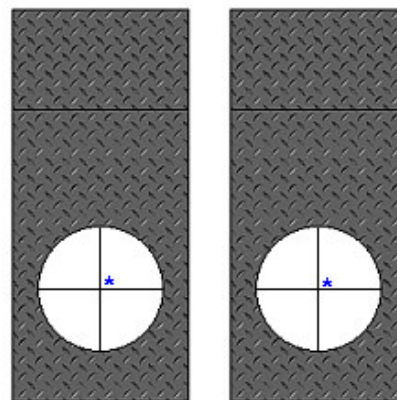


Fold the tabs in part A down.
Fold the tabs in part B up a place inside part A.

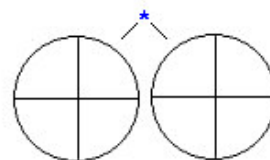


Seperate rear Ammo/Power boxes?

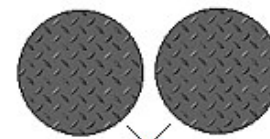
Turret Base Tops



Glue bottoms to parts maked with *



Cylinder tops and bottom



Glue tops to parts maked with *

Cylinder Midscetions

Turret Base Fondations

