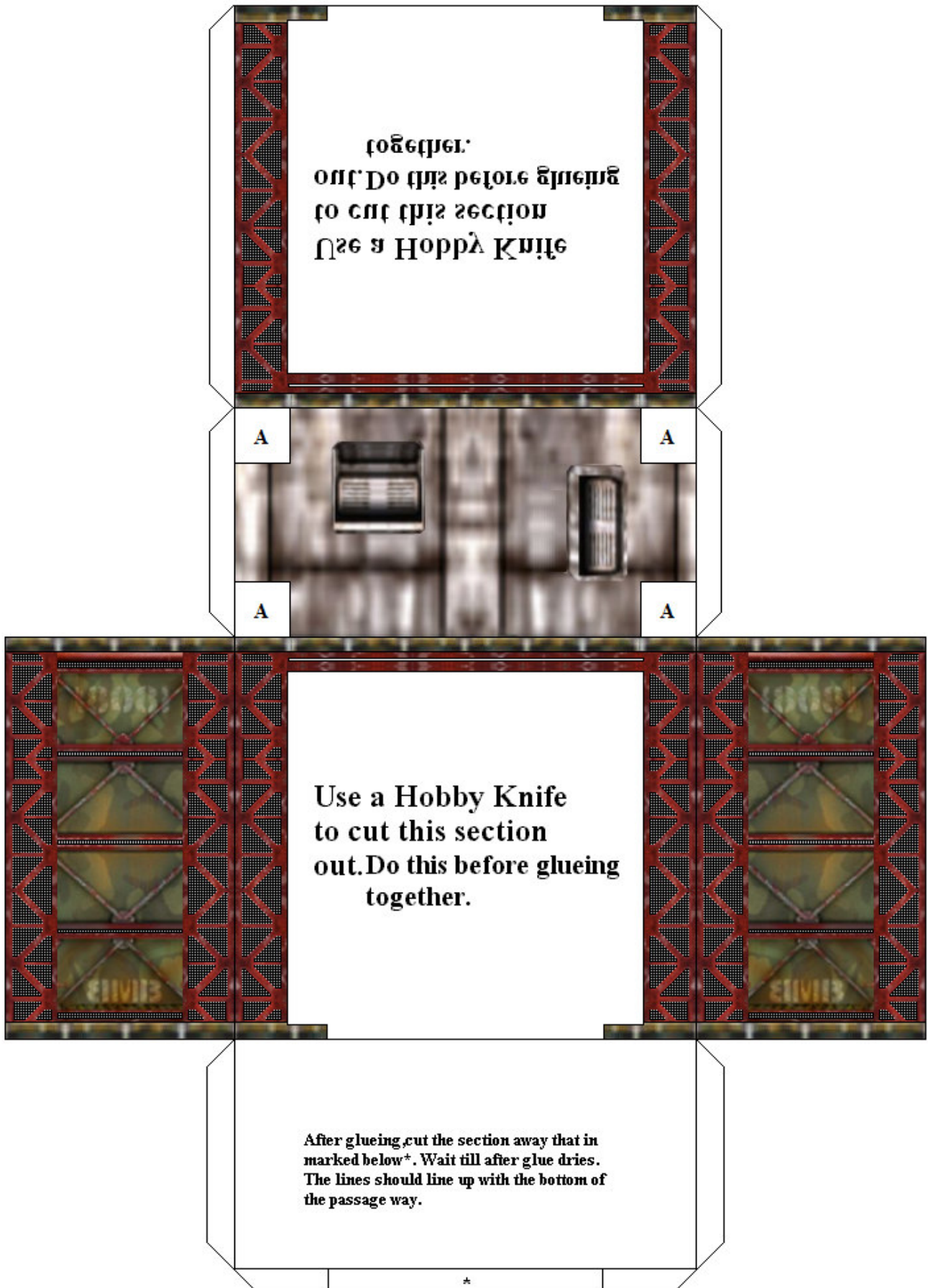
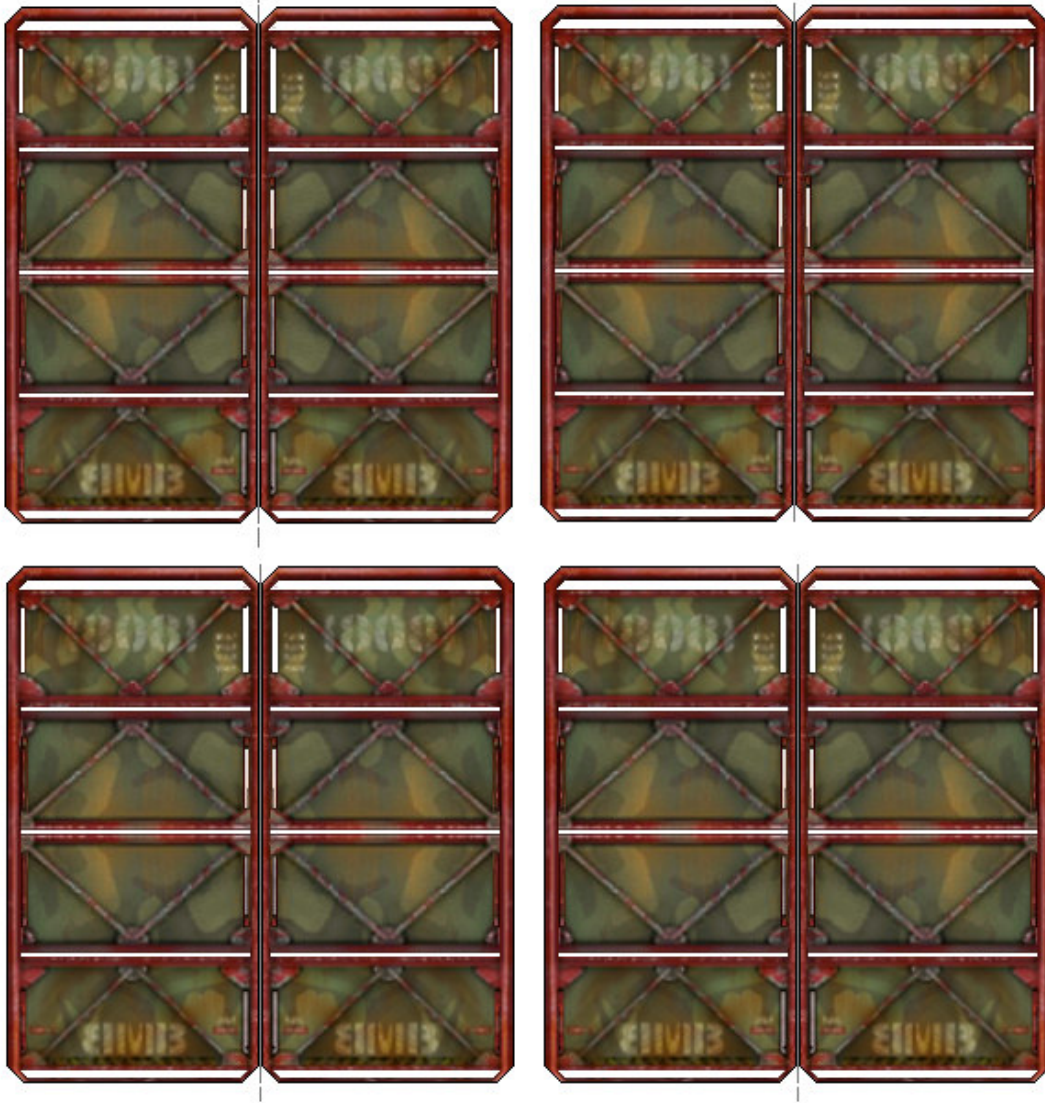


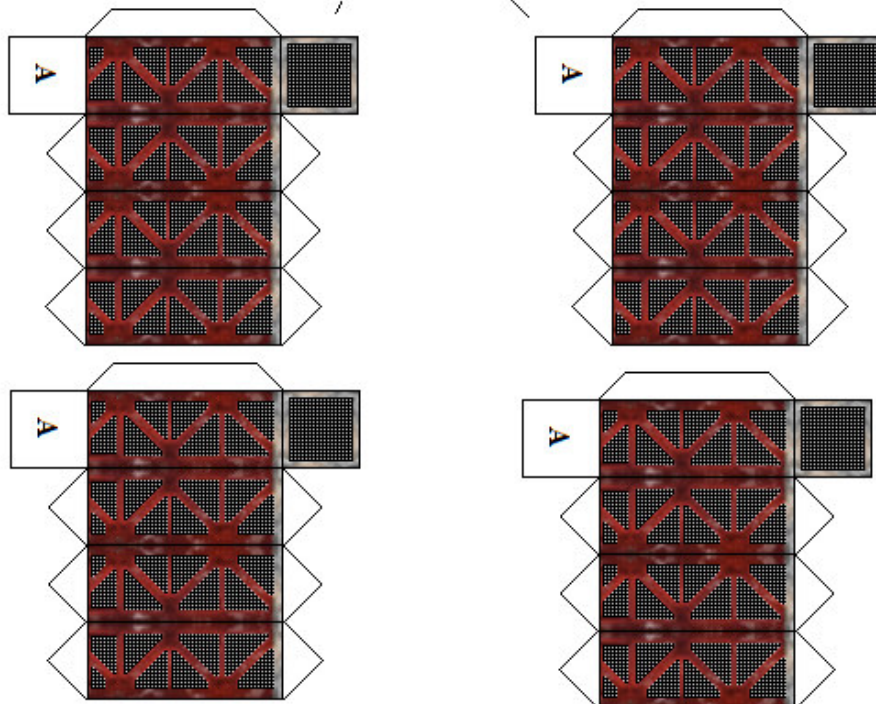
Open Door Repair Bay

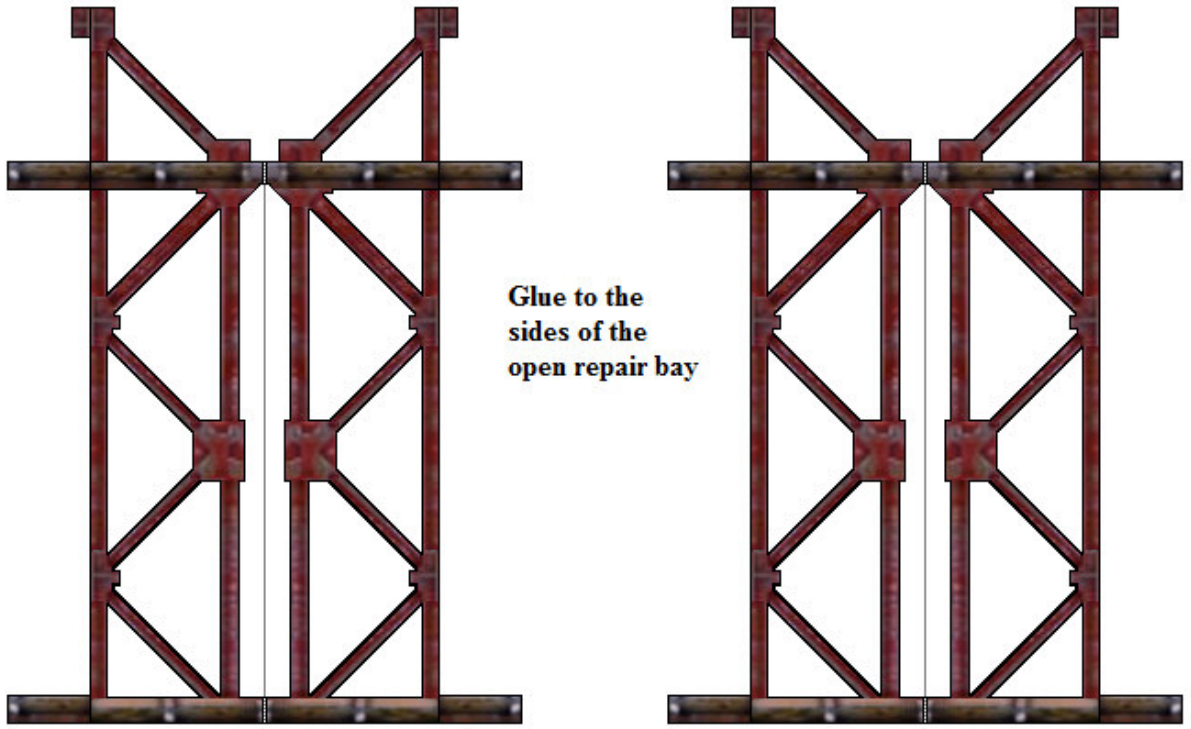


Glue doors to the rigging in an open position.



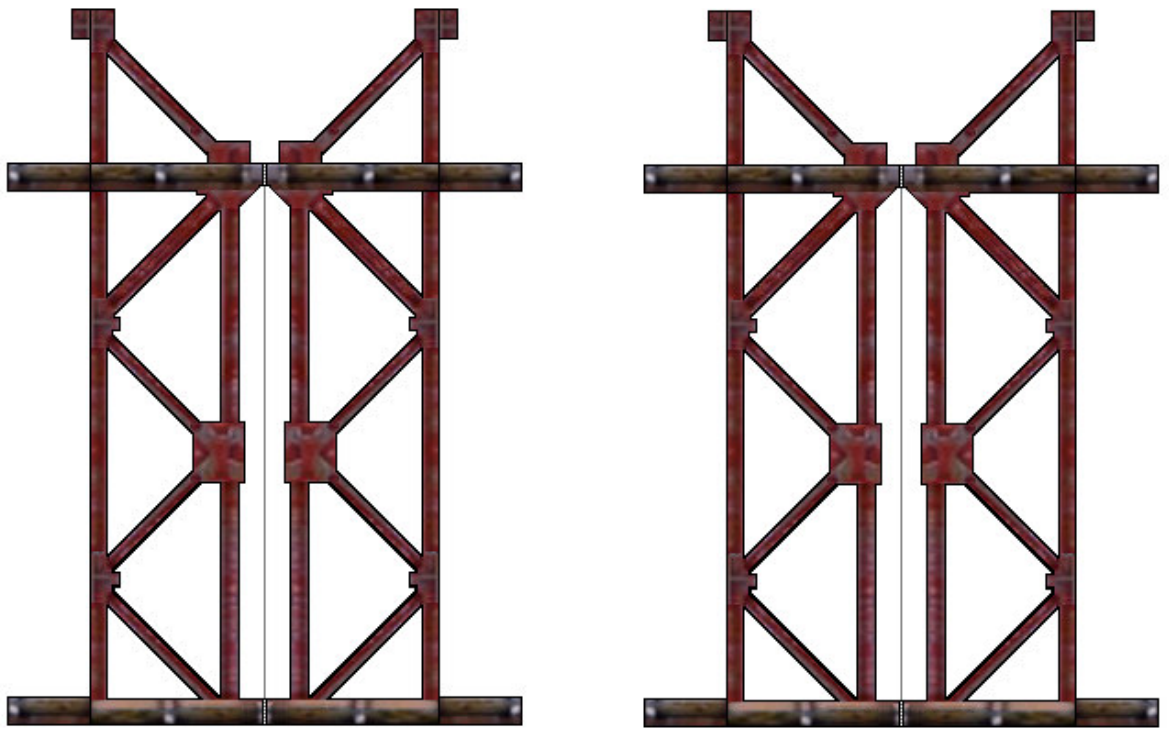
Glue top riggings
to top of open repair
bay marked A



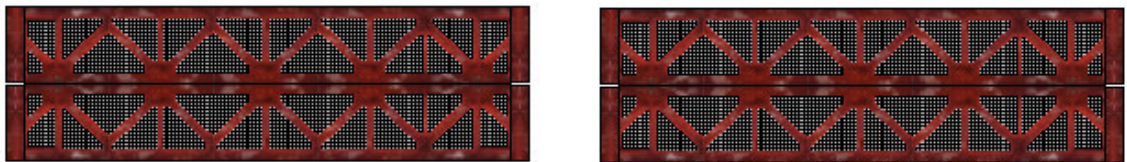


Glue to the sides of the open repair bay

Cutting away white section of the riggings is optional but recommend for looks.

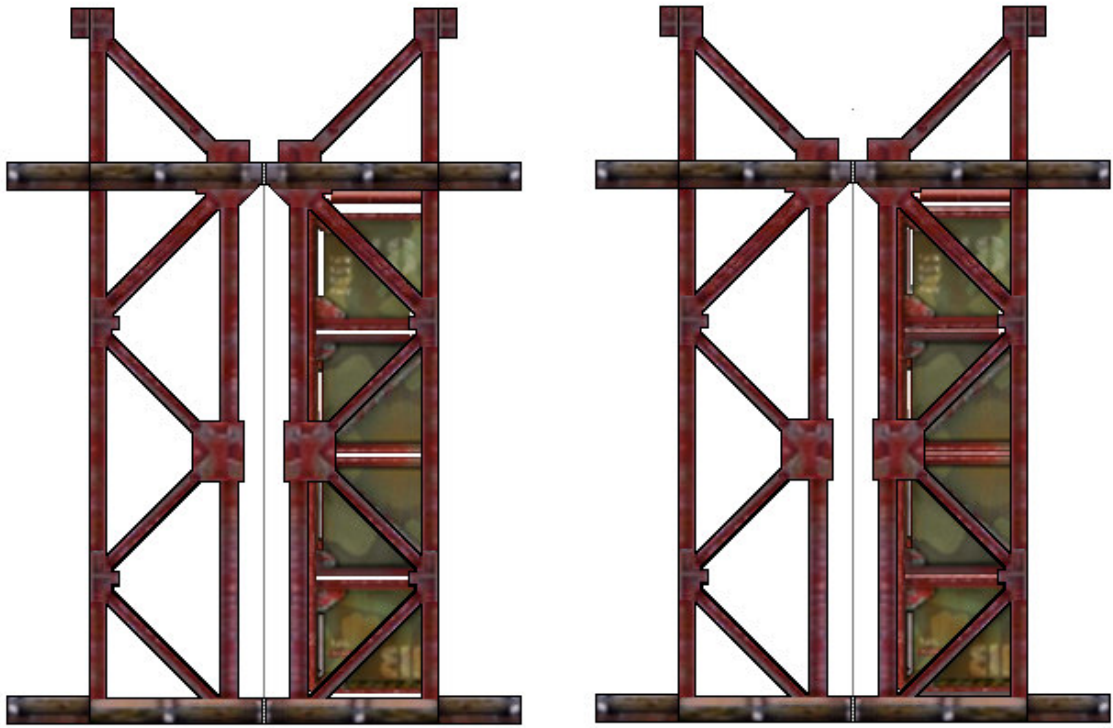


Glue top runners inbetween the top rigging at the top of the open repair bay



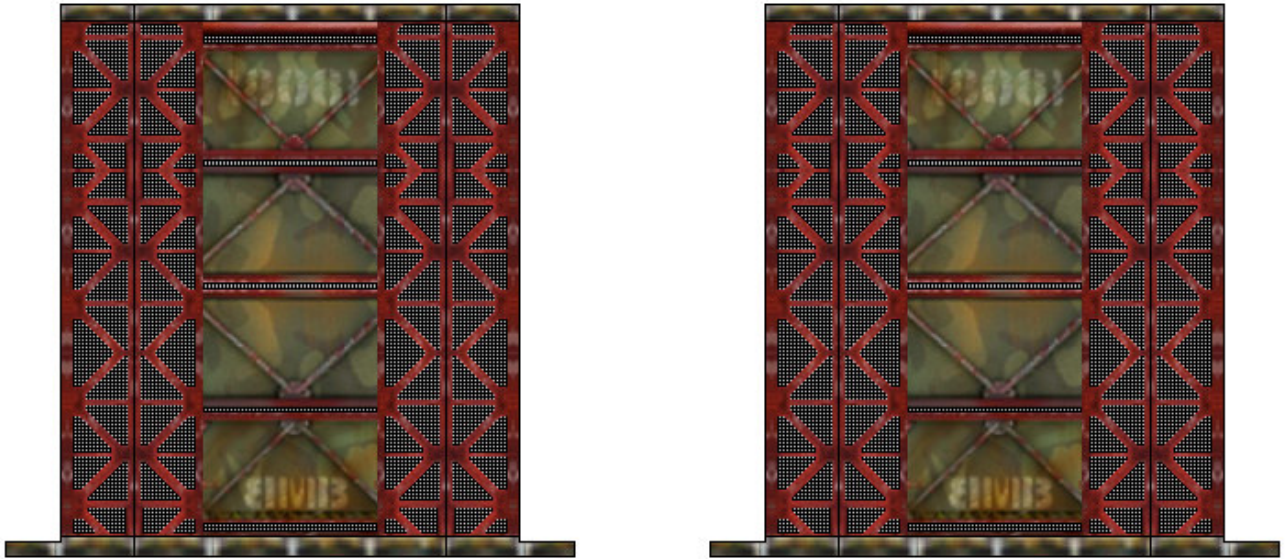
Top Runners

Cheater Runners

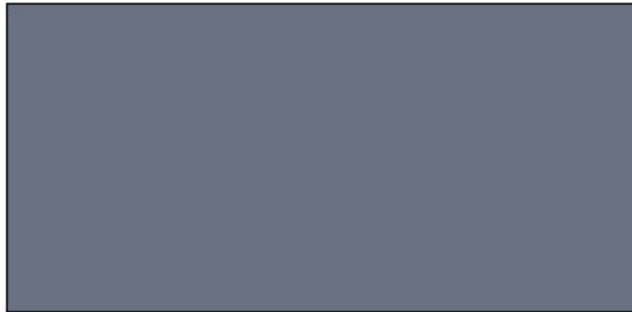
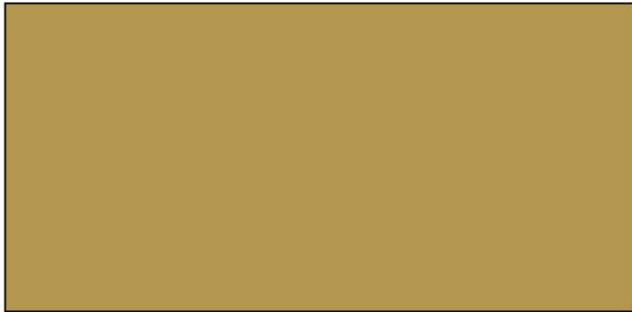


Fold the door in half and glue to the white side so that you do not have to cut out the white sections out of the runners.

Repair Bay Interior Inserts



Place these into side walls on the left and right inside



Insert to into the bottom of the Open repair bay. Use the color that is correct for the terrain that is being used.

Terrian color inserts

