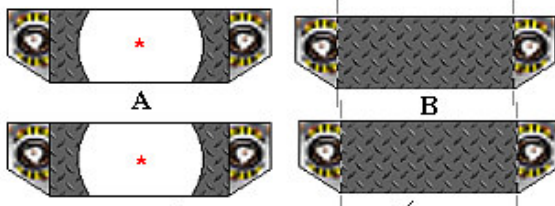
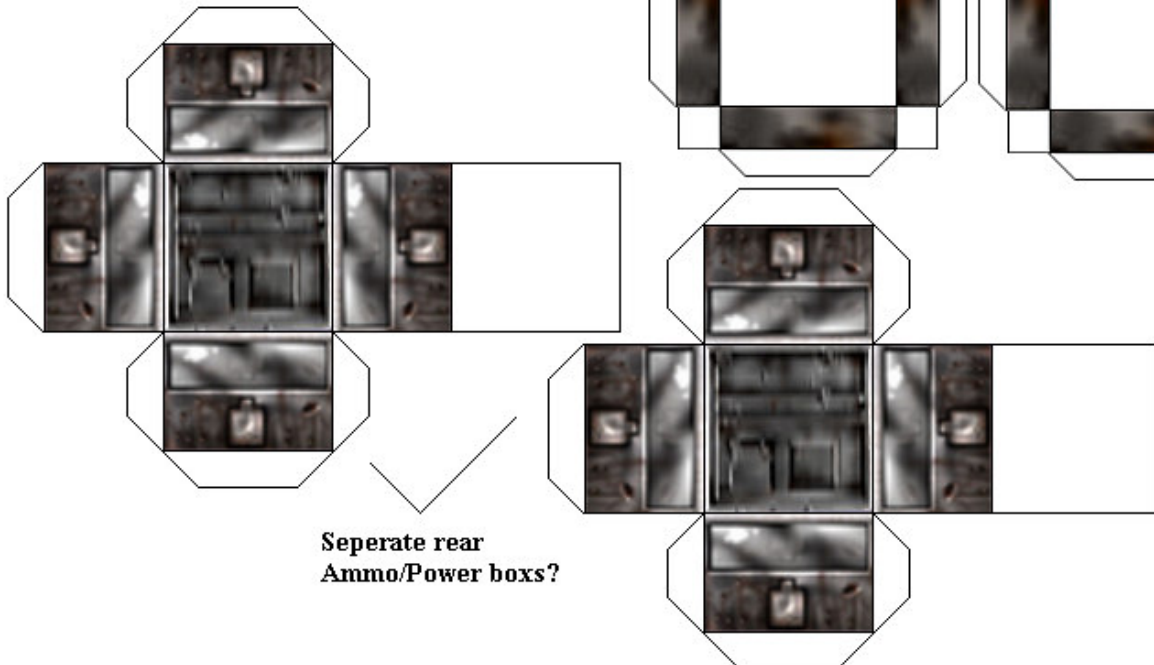


Place missile boxes inside part B after placing part B inside of part A

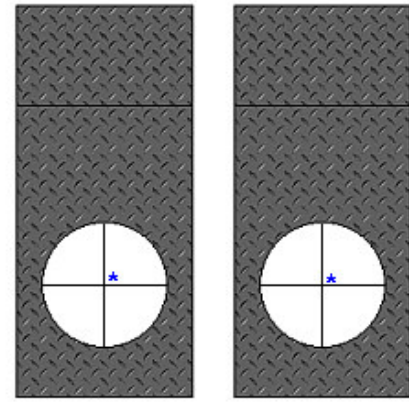


Fold the tabs in part A down.
Fold the tabs in part B up a place inside part A.

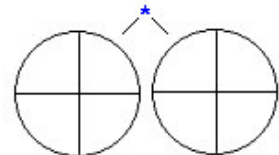


Seperate rear Ammo/Power boxes?

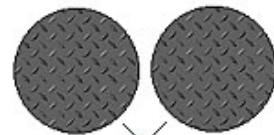
Turret Base Tops



Glue bottoms to parts made with *



Cylinder tops and bottom



Glue tops to parts made with *

Cylinder Midsections

Turret Base Foundations

