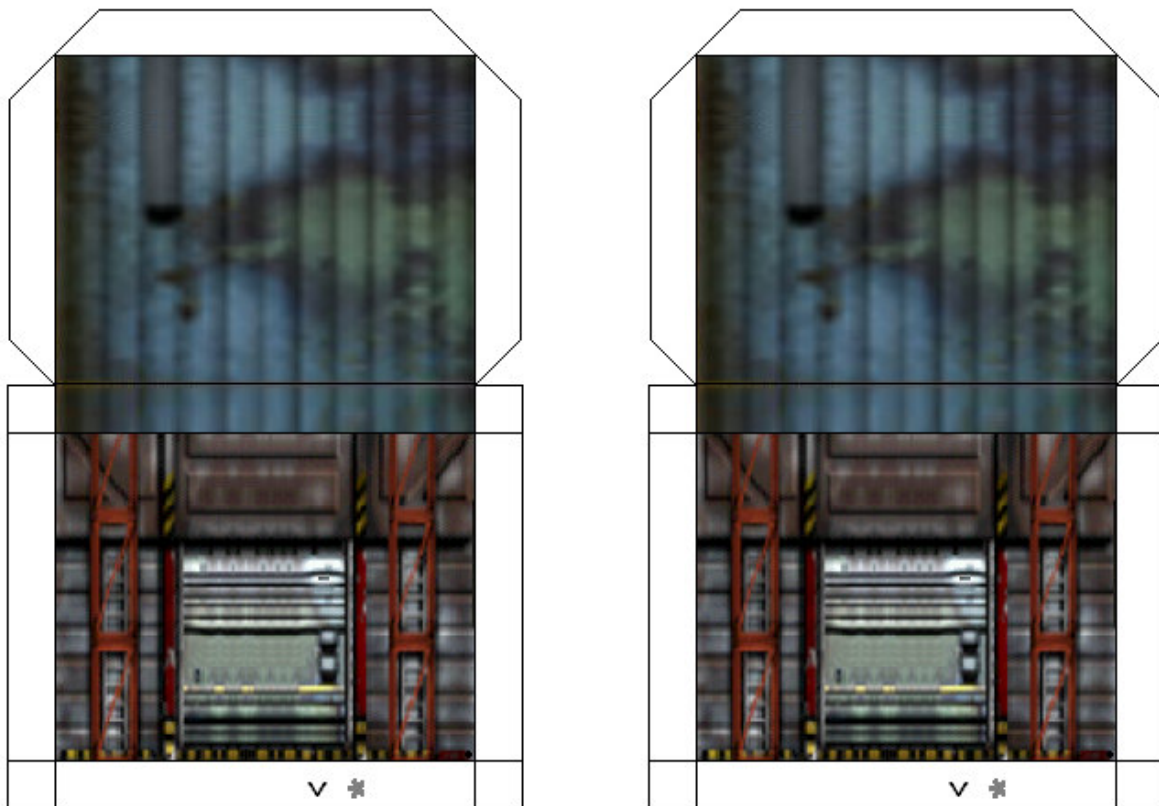
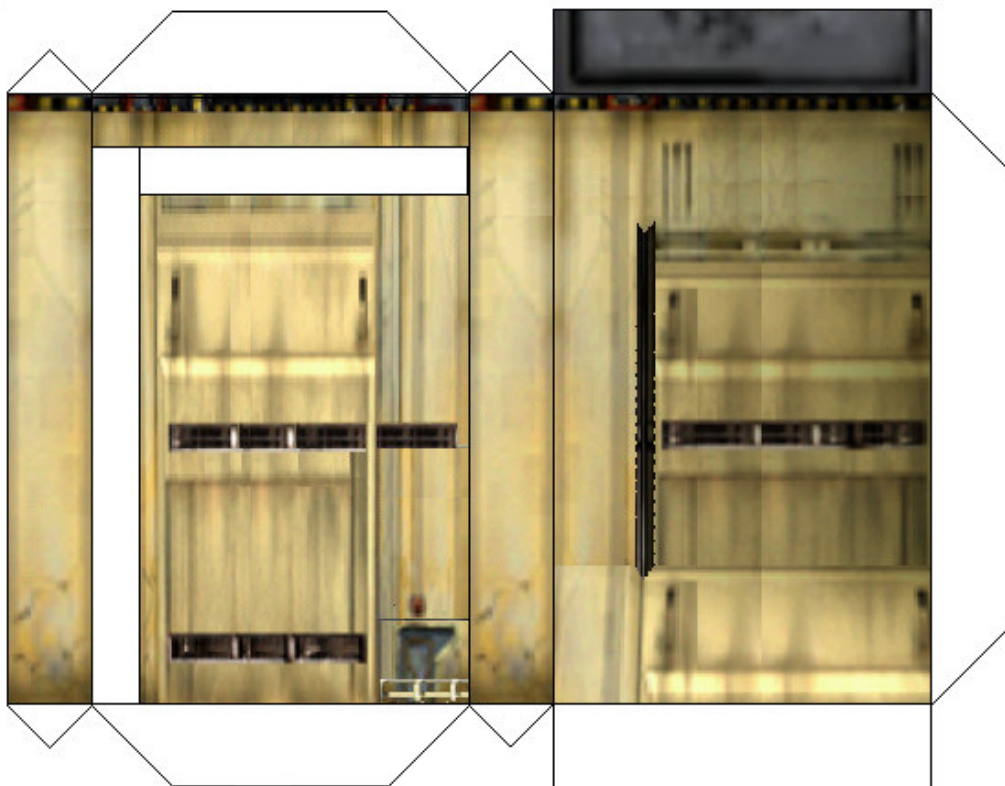


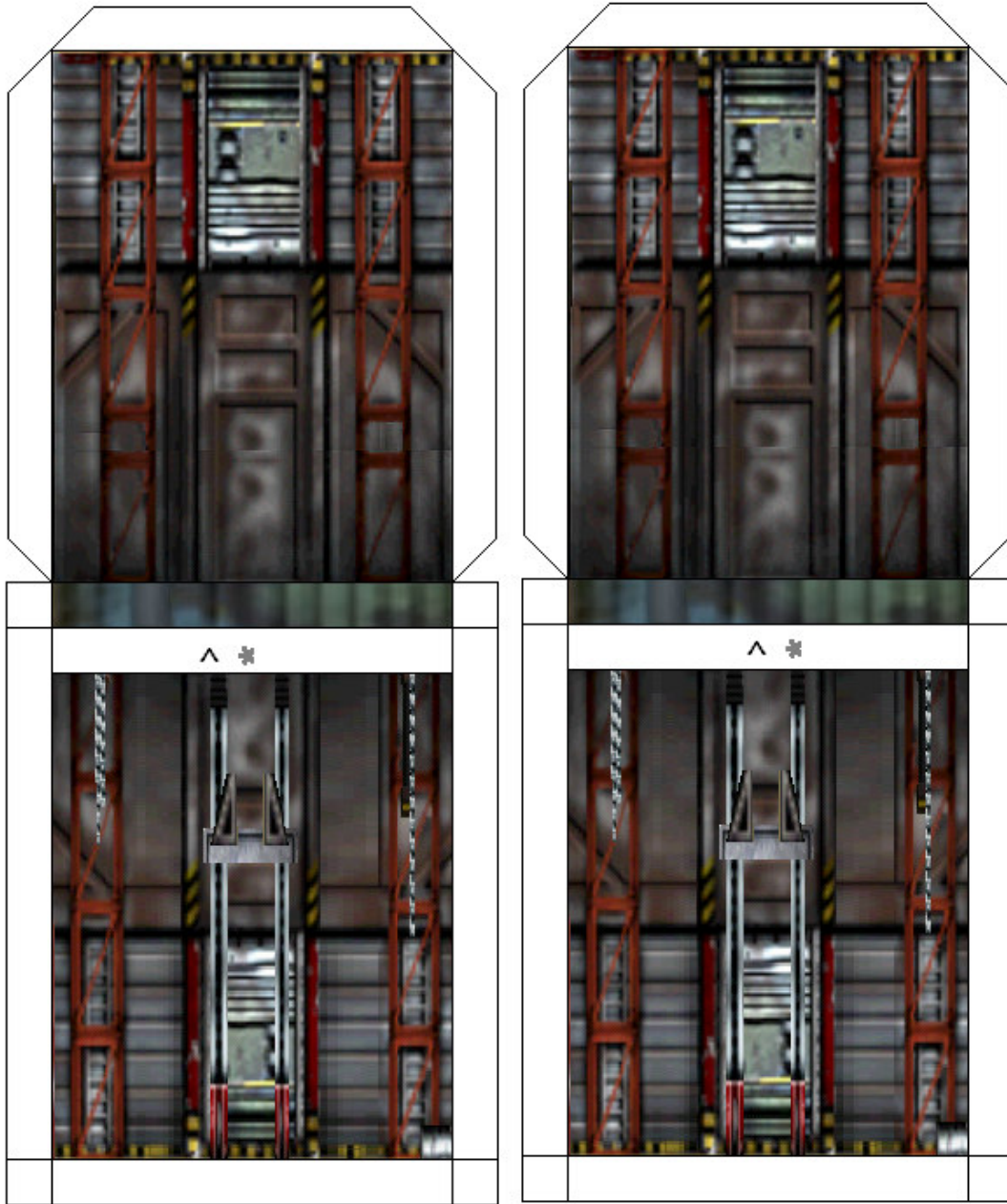
Roofs and Right Wall



Make sure arrows match the direction the arrows are pointing on the back walls.



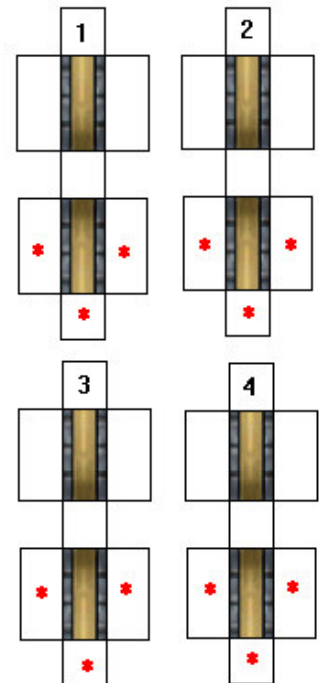
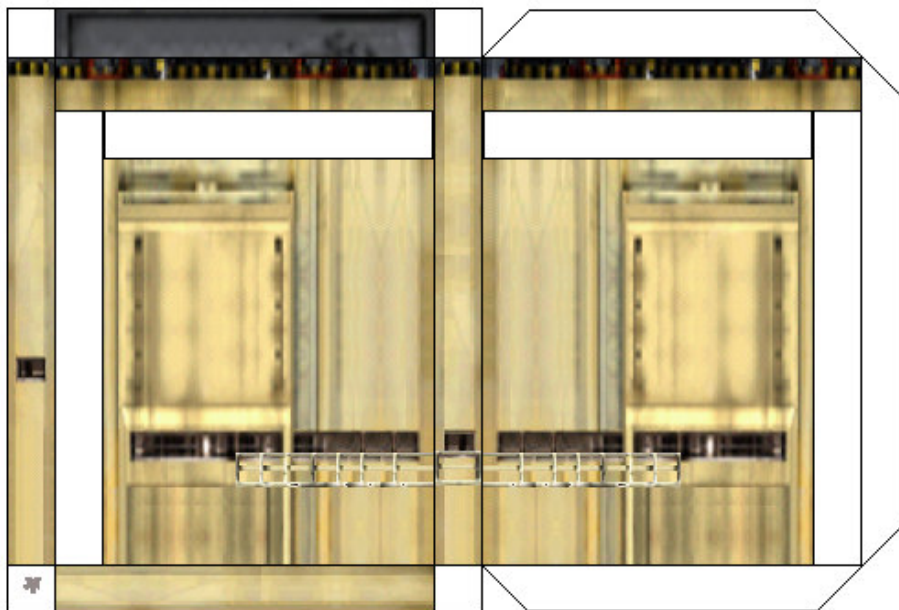
Back Walls and Center Piece



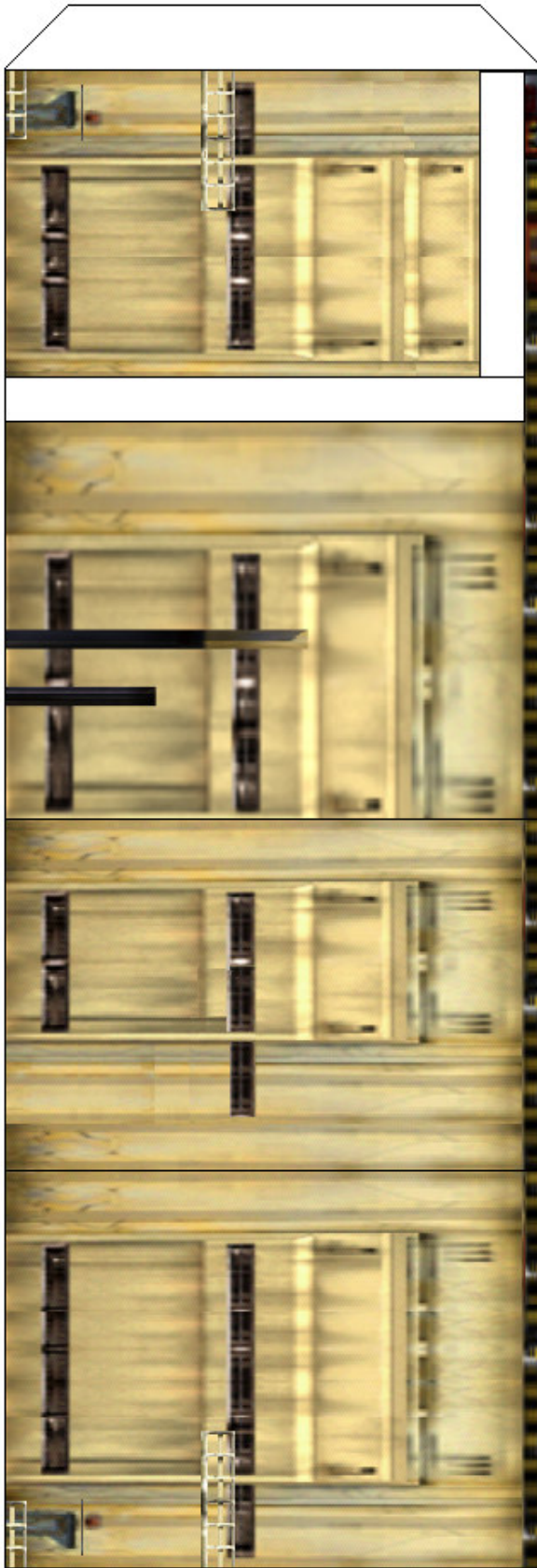
Each gap peg is short than the other so that you may determine which one will fit in the gap in the back wall left by the center piece. Don't glue in place until you determine which one fits the best.

* - Glue Here

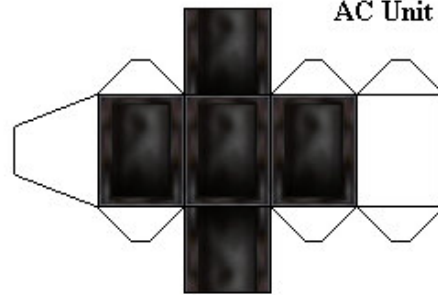
Gap Pegs



Left Wall And AC Unit



AC Unit



Foundation Piece

