

Type: Barnes LR Recon Vehicle (BYE Military Industries)

Tech Rating: D

Chassis Type: Wheeled

Mass: 4740 kg

Chassis Modifications: Ultralight

Crew: 2 +2

Cargo: 200 kg

Engine Type: Fuel Cell

Cruise MP/Safe Thrust: 9

Flank MP/Maximum Thrust: 14

Range (km)/Thrust Points 1523 km

Heat Sinks: 0

Armor Type BAR 5

Armor Points 12

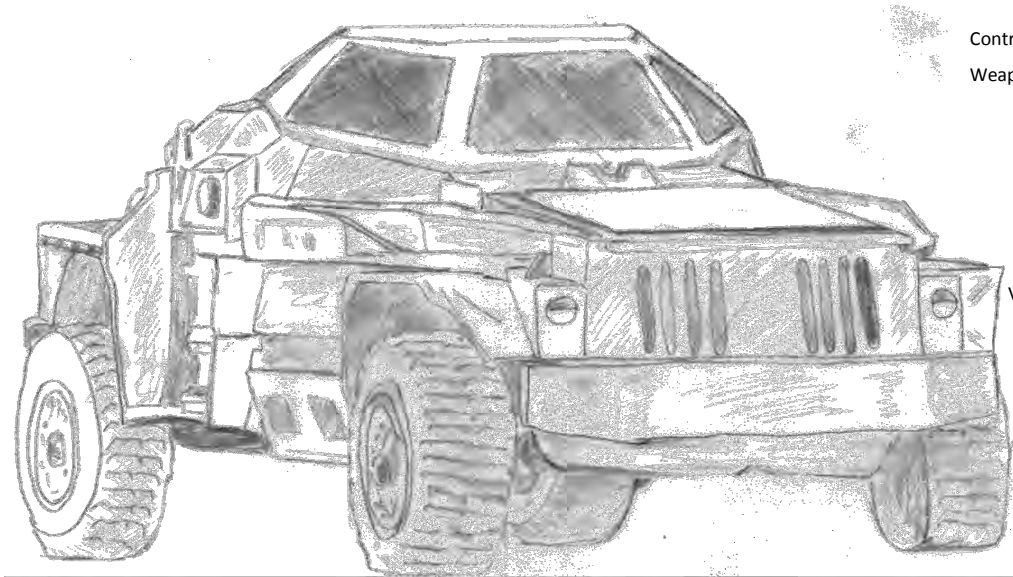
Location	Internal Structure	Armor Value
Front	1	4
Right/Left	1	2
Rear	1	4

Controls: Advanced

Weapons and Equipment:

- 1 x Heavy Support MG (Pintle)
50 bursts
- 2 x RL-10 (Primatived) (Front)
- 2 x RL-10 (Primitive) (Rear)

Variant: Occassionally, the rear seating for 2 is removed for the installation of 150 kg of fuel which increases range to 3006 km

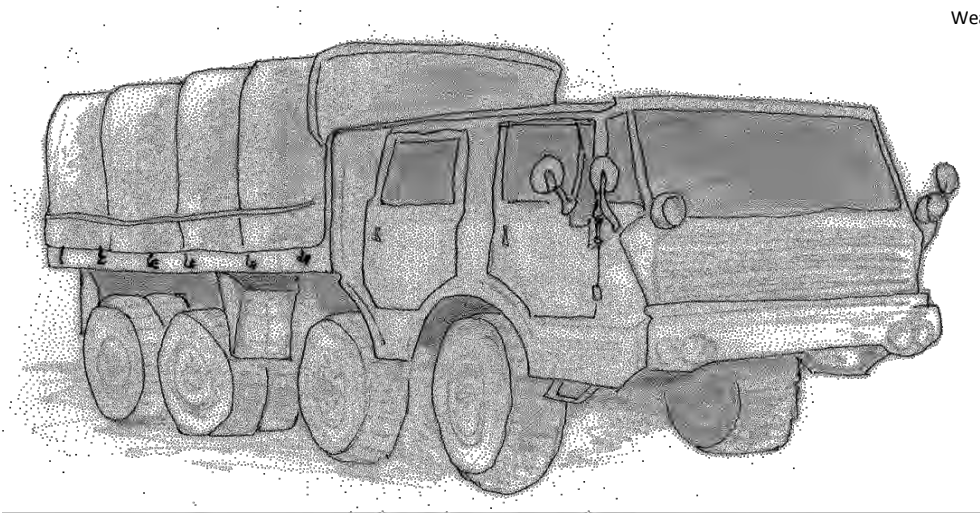


Type:	Road Donkey	(Rothstein Defense Solutions)	Engine Type:	ICE	
Tech Rating:	D		Cruise MP/Safe Thrust:	5	
Chassis Type:	Wheeled		Flank MP/Maximum Thrust:	8	
Mass:	10 tons		Range (km)/Thrust Points	1000 km	
Chassis Modifications:			Heat Sinks:	0	
	Tractor		Armor Type	BAR 3	
	Off Road		Armor Points	24	
			Location	Internal Structure	Armor Value
Crew:	2		Front	1	6
Cargo:			Right/Left Side	1	6
	3 tons		Rear	1	6

Controls: None

Weapons and Equipment:

- 1 x Heavy Support MG (Pintle Mount)
- 50 shots Heavy Support MG Ammo



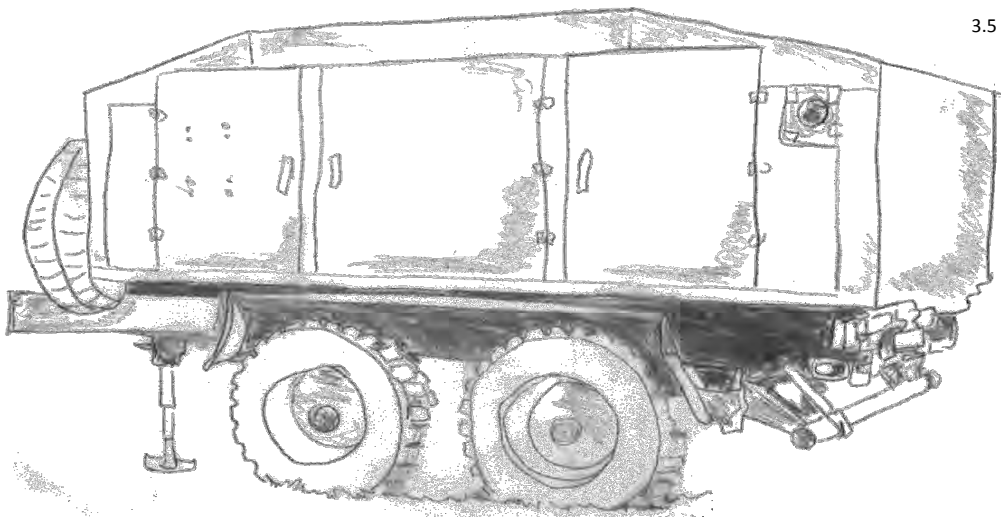
Type:	Red Tail Trailer	(Rothstein Defense Solutions)	Engine Type:	NA	
Tech Rating:	D		Cruise MP/Safe Thrust:	NA	
Chassis Type:	Wheeled		Flank MP/Maximum Thrust:	NA	
Mass:	4150 kg		Range (km)/Thrust Points	NA	
Chassis Modifications:			Heat Sinks:	0	
	Trailer		Armor Type	BAR 3	
	Off Road		Armor Points	8	
			Location	Internal Structure	Armor Value
Crew:	NA		Front	1	2
Cargo:			Right/Left Side	1	2
	3500 kg		Rear	1	2

Controls:

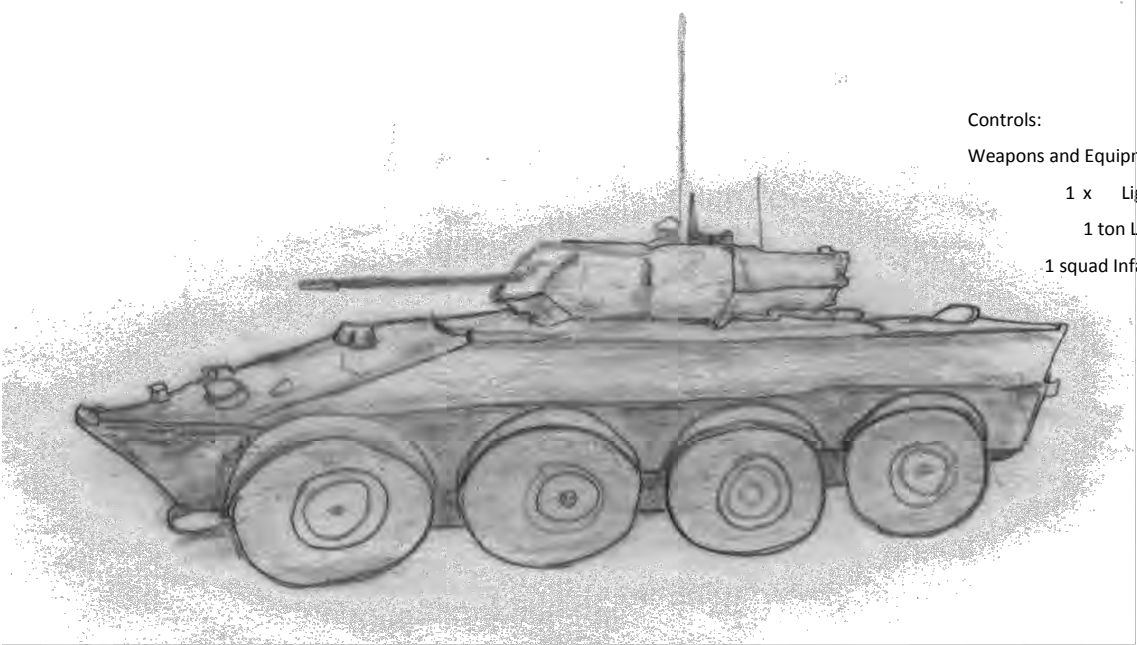
None

Weapons and Equipment:

3.5 tons Cargo



Type:	Road Pony IFV	(Rothstein Defense Solutions)	Engine Type:	ICE	
Tech Rating:	D		Cruise MP/Safe Thrust:	5	
Chassis Type:	Wheeled		Flank MP/Maximum Thrust:	8	
Mass:	15		Range (km)/Thrust Points	1000 km	
Chassis Modifications:			Heat Sinks:	0	
	Off Road		Armor Type	BAR 7	
			Armor Points	22	
			Location	Internal Structure	Armor Value
Crew:	3		Front	2	6
Cargo:			Right/Left Side	2	3
			Rear	2	4
			Turret	2	6



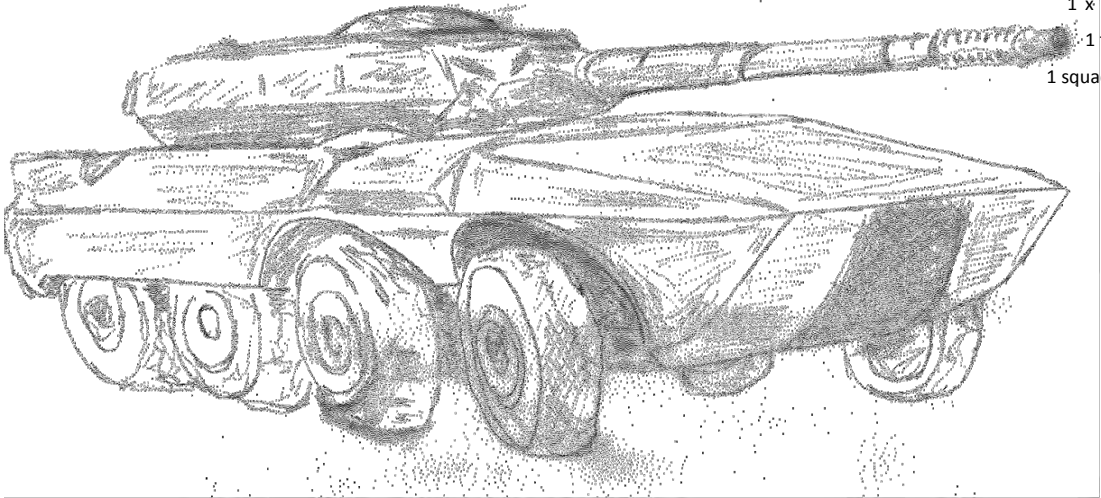
- Controls: Advanced
- Weapons and Equipment:
- 1 x Light Rifle (Turret)
 - 1 ton Light Rifle Ammo
 - 1 squad Infantry

Type:	Swamp Pony	(Rothstein Defense Solutions)	Engine Type:	ICE	
Tech Rating:	D		Cruise MP/Safe Thrust:	4	
Chassis Type:	Wheeled		Flank MP/Maximum Thrust:	6	
Mass:	23		Range (km)/Thrust Points	909 km	
Chassis Modifications:			Heat Sinks:	0	
	Amphibious		Armor Type	BAR 7	
	Off Road		Armor Points	33	
			Location	Internal Structure	Armor Value
Crew:	3		Front	3	7
Cargo:			Right/Left Side	3	6
			Rear	3	6
			Turret	3	8

Controls: Advanced

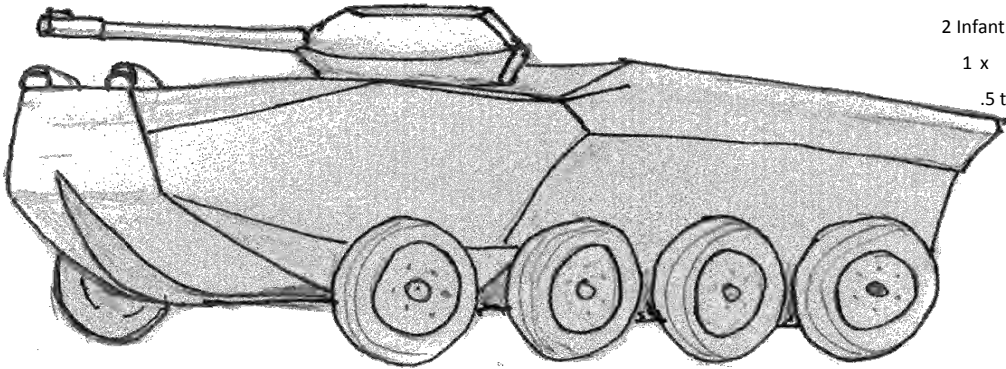
Weapons and Equipment:

- 1 x Medium Rifle (Turret)
- 1 ton Medium Rifle Ammo
- 1 squad Infantry



Type:	Cychreides Landing Assault Craft	(Christianson, Cappiazi, and Cart Engine Type:		Fission
Tech Rating:	D	Cruise MP/Safe Thrust:		5
Chassis Type:	Wheeled	Flank MP/Maximum Thrust:		8
Mass:	36	Range (km)/Thrust Points		Unlimited
Chassis Modifications:	Amphibious	Heat Sinks:		0
		Armor Type		BAR 7
		Armor Points		66
		Location	Internal Structure	Armor Value
Crew:	4	Front	4	15
Cargo:		Right/Left Side	4	13
		Rear	4	9
		Turret	4	16

Controls:	Advanced
Weapons and Equipment:	
1 x Revolver Cannon (Turret)	
1 ton Revolver Cannon Ammo	
2 Infantry Bays (2 PLT Infantry)	
1 x Machinegun (Front)	
.5 ton MG Ammo (100)	



Type:	Silver Fox Rapid Assault Tank	(Rothstein Defense Solutions)	Engine Type:	ICE	
Tech Rating:	D		Cruise MP/Safe Thrust:	4	
Chassis Type:	Tracked		Flank MP/Maximum Thrust:	6	
Mass:	15 tons		Range (km)/Thrust Points	555 km	
Chassis Modifications:			Heat Sinks:	0	
			Armor Type	BAR 4	
			Armor Points	34	
			Location	Internal Structure	Armor Value
Crew:	2		Front	2	9
Cargo:			Right/Left Side	2	5
			Rear	2	6
			Turret	2	9

Controls:

Advanced

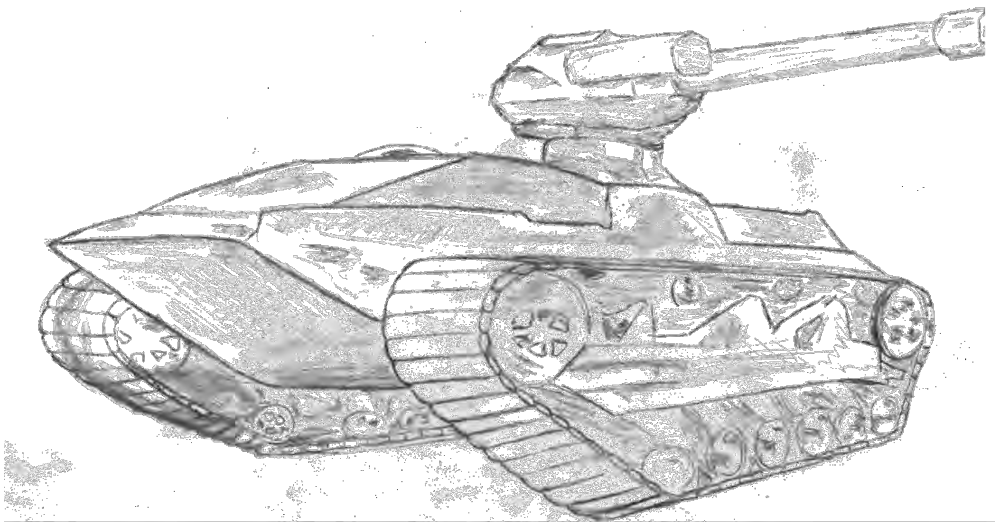
Weapons and Equipment:

1 x Revolver Cannon (Turret)

1 ton Revolver Cannon ammo

1 x Machinegun (Turret)

.5 ton MG ammo



Type:	Rigaud	Light Tank	(BYE Military Industries)	Engine Type:	Fuel Cell
-------	--------	------------	---------------------------	--------------	-----------